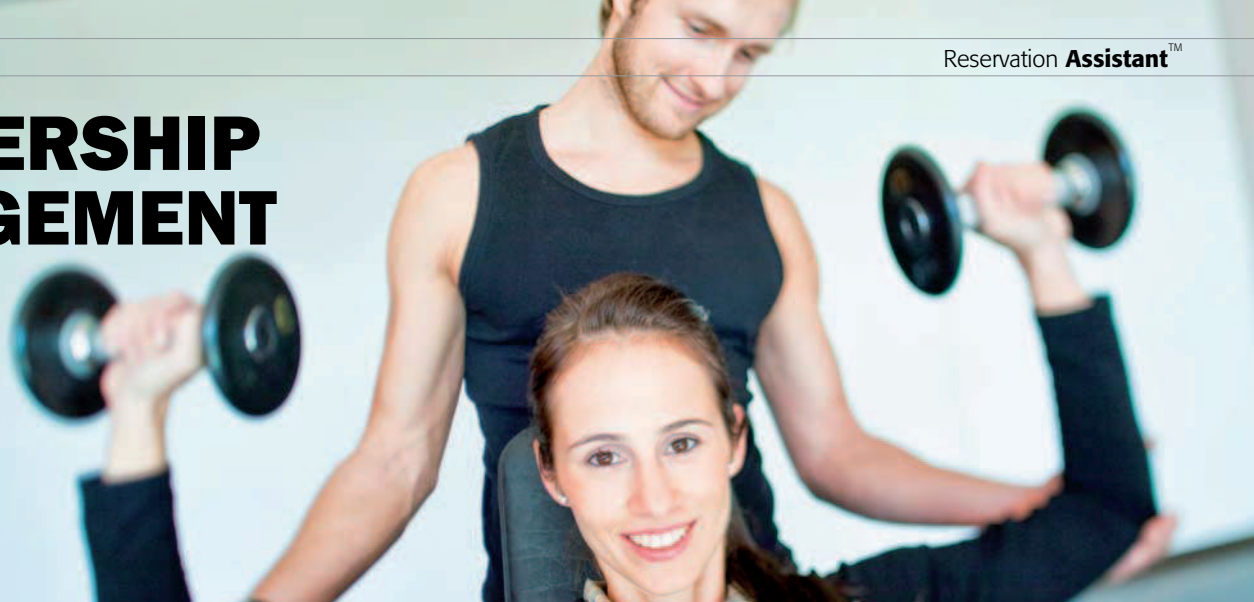


MEMBERSHIP MANAGEMENT



Welcome Aboard

Members usually enjoy special conditions in your spa and fitness center. They may use your fitness rooms during defined time periods, get reduced price access to your spa and enjoy discounts for certain services, courses and treatments.

This and similar scenarios can be perfectly illustrated with the membership management module. Reservation Assistant automatically handles your members' master data including picture and membership card. This means that you can retrieve your members' current data at any time.

The membership contracts can be flexibly adapted to the guest's requirements in terms of duration, extension method and pricing model. The system also manages the membership contracts and automatically balances the membership fees according to predefined rules. Payment of the fees can be made at any desired intervals – monthly, quarterly, biannually or annually. But it is your decision when turnover is generated. Furthermore, you can grant your members bonus months, for example if they recruit new members.

The system automatically reminds you of expiring membership contracts. In this way you offer your guests your service at the right time and as a result increase membership retention. Of course, this module is also meant for full integration into external systems. Connections to access control systems, POS or to the financial accounting system can easily be installed.

Reservation Assistant's check-in function not only allows your guests access to your spa and fitness facilities, but also administers the key allocation for lockers and dressing rooms. Whenever a guest leaves your company, the check-out function displays outstanding items the guest has not yet paid for. All information about check-in and check-out is saved in the respective guest profile.

Your Benefits

- ✓ Enrollment fee, inactive contracts, special fees
- ✓ Various payment methods
(direct debit, transfer, cash or credit card)
- ✓ Subscription management
- ✓ Electronic direct debit payment
- ✓ Contract extension reminder with letter function
- ✓ Block contracts
- ✓ Print contracts
- ✓ Print encoded membership cards with special printer
- ✓ Contract evaluation, revenue evaluation and graphic representation in the form of diagrams
- ✓ Automatic split of turnover into months
in case of single payment
- ✓ Check-in and check-out administration

